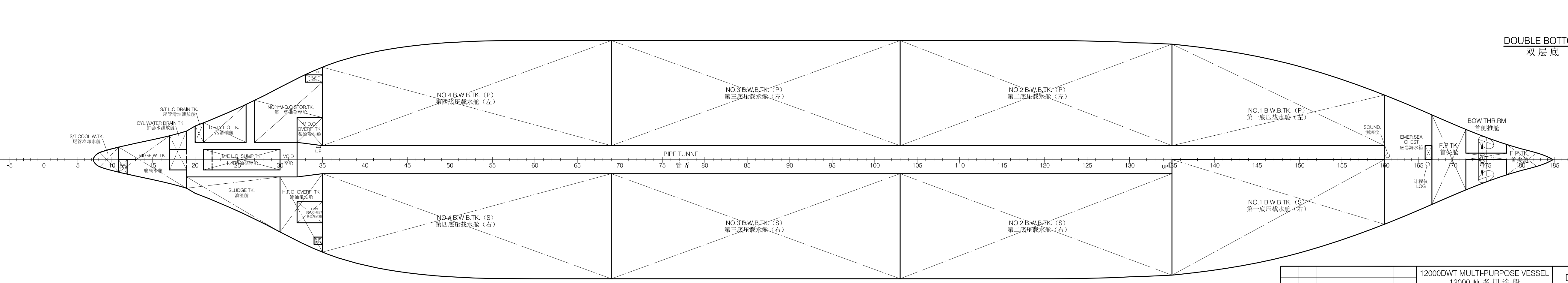
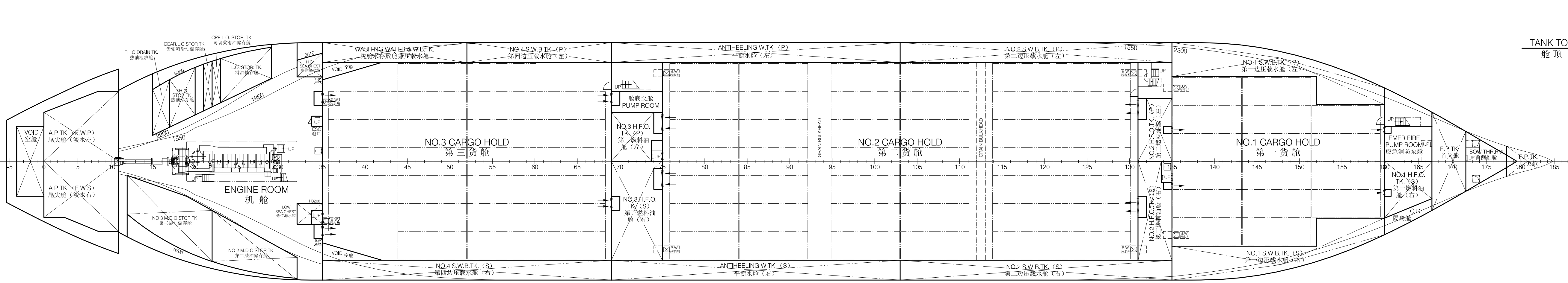
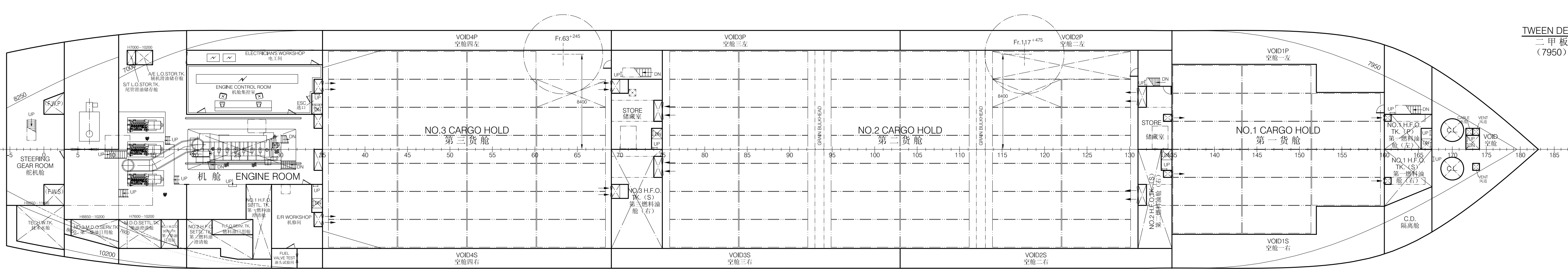
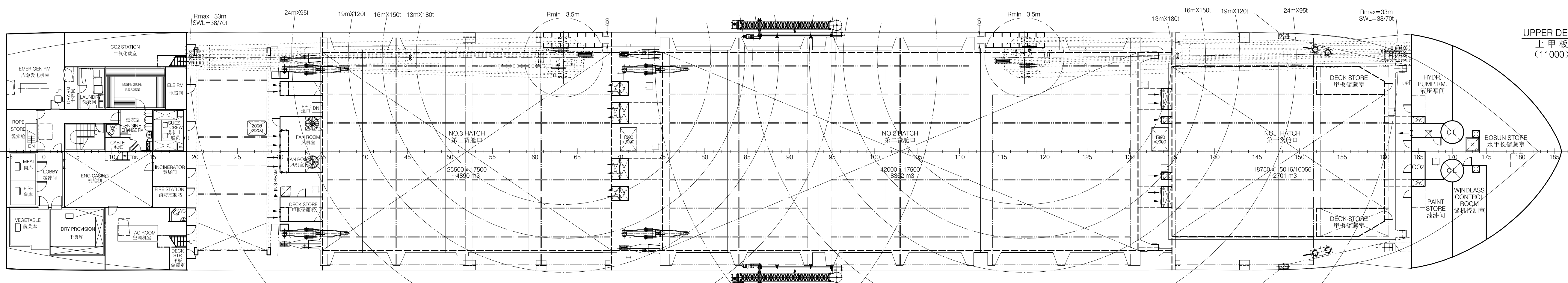
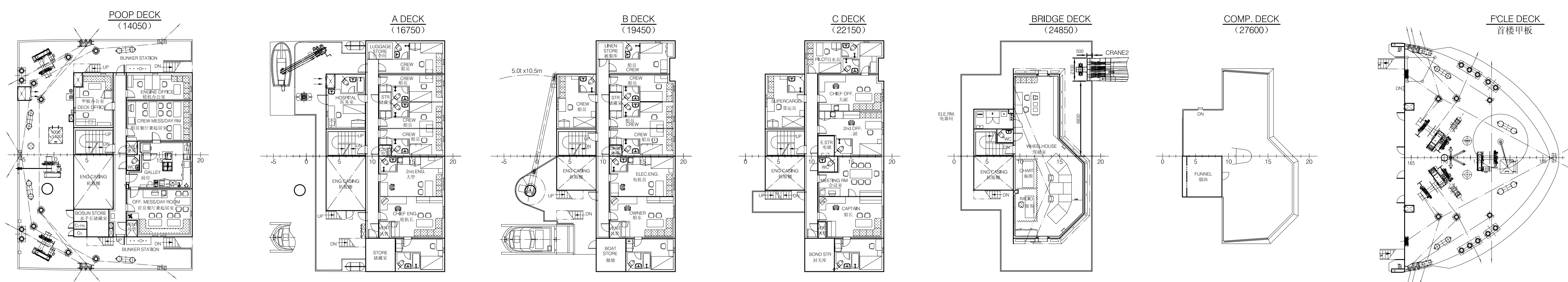
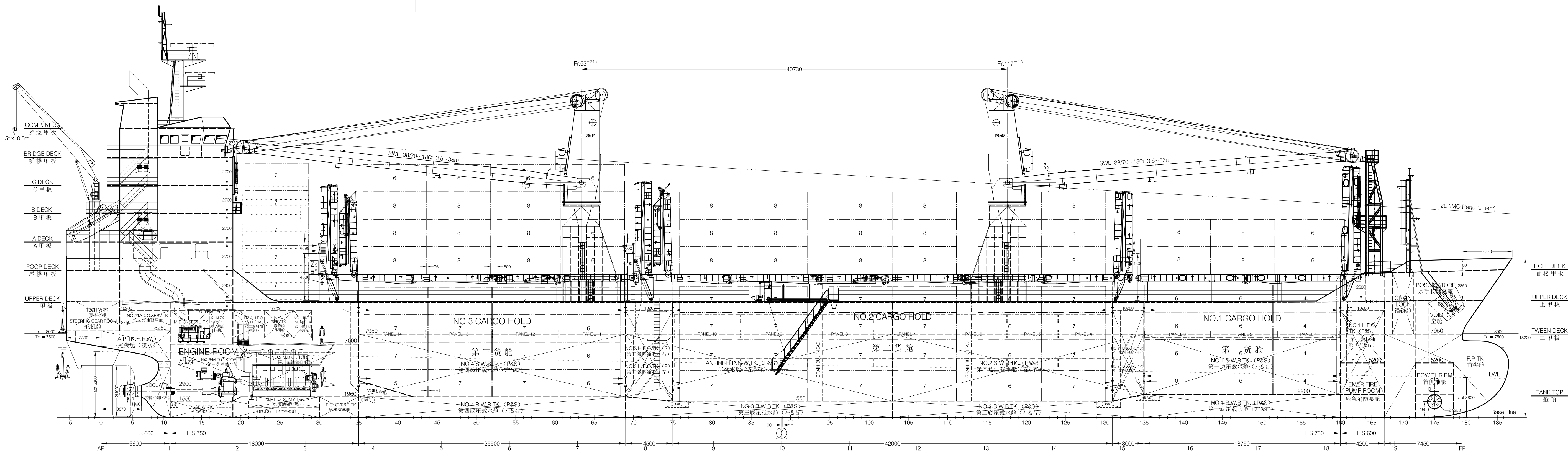


PRINCIPAL PARTICULARS

LENGTH O.A.	138.07 m	MAIN ENGINE	MAK 6M43C 1 Set
LENGTH B.P.	130.00 m	MCR	5400KW x 500r/min
BREADTH MLD.	21.00 m	SERVICE SPEED (90%MCR - 250kW PFD with 10% See Margin at Designed Draft)	15.0 kn
DEPTH MLD.	11.00 m	CRUISING RANGE	~11000 n.miles
DESIGNED DRAFT	7.50 m	COMPLEMENT	20 P
SCANTLING DRAFT	8.00 m	CLASSIFICATION	GL 100 A5, E3, G, W, BWM-F, MULTI-PURPOSE DRY CARGO SHIP, STRENGTHENED FOR HEAVY CARGO, EQUIPPED FOR CARRIAGE OF CONTAINERS, SOLAS II-2, REG 19 MC E3 AUT
DEADWEIGHT AT DESIGNED DRAFT	~11416 t		
SCANTLING DRAFT	~12672 t		
CARGO HOLD CAPACITY	15953 m3		
CONTAINER CAPACITY: ON DECK	331 TEU		
IN HOLD	334 TEU		
TOTAL	665 TEU		



12000DWT MULTI-PURPOSE VESSEL 12000吨多用途船		DETAIL DESIGN 详细设计	
GENERAL ARRANGEMENT PLAN 总布置图		SC4569-100-05	
比例 1:100	日期 2024.05.15	设计 1:1	面积 1.00 m ²
Hull No. JD12000-19/20/21/22		DESIGN & RESEARCH INSTITUTE (CSCE) + 上海船舶研究设计院	
This drawing and the information contained in the exclusive property of SDARI and must not be copied or handed over to third parties without our written permission.			
本图(文件)及所含内容的知识产权属于上海船舶研究设计院(SDARI), 未经授权不得复制或转交第三方。			