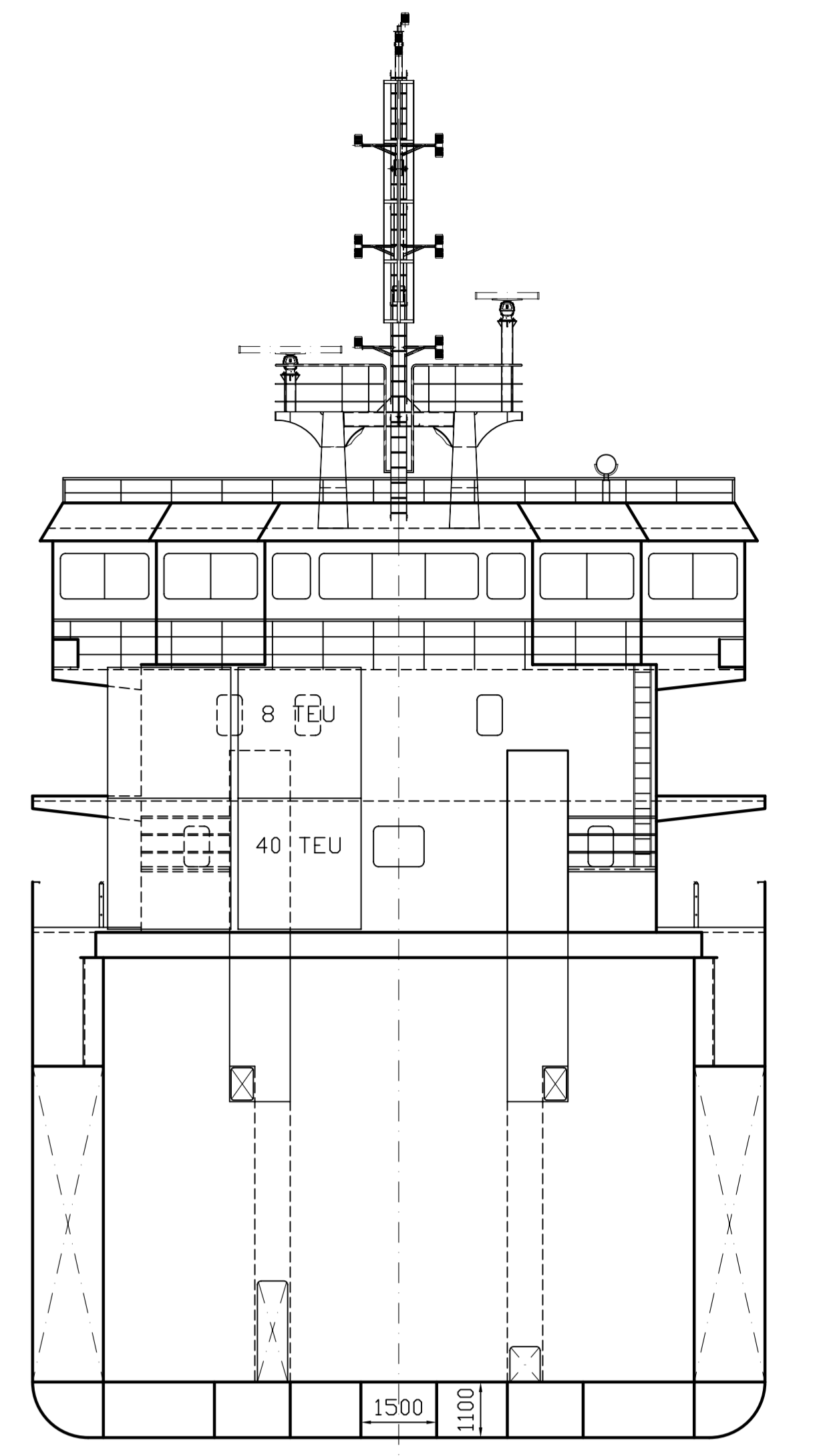
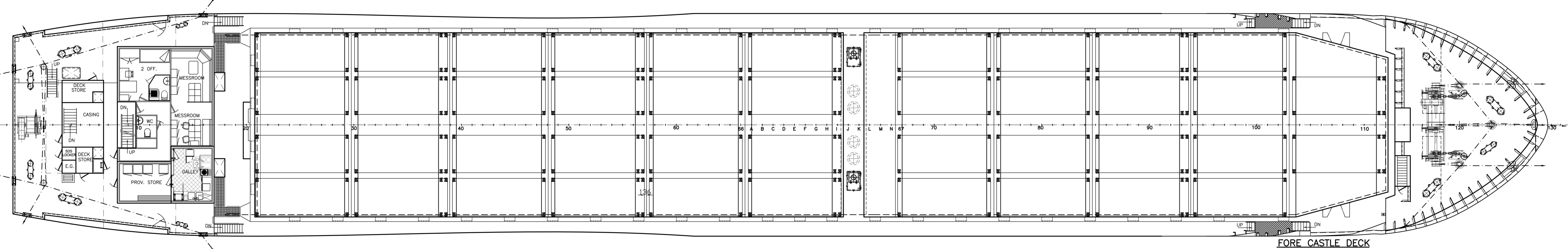


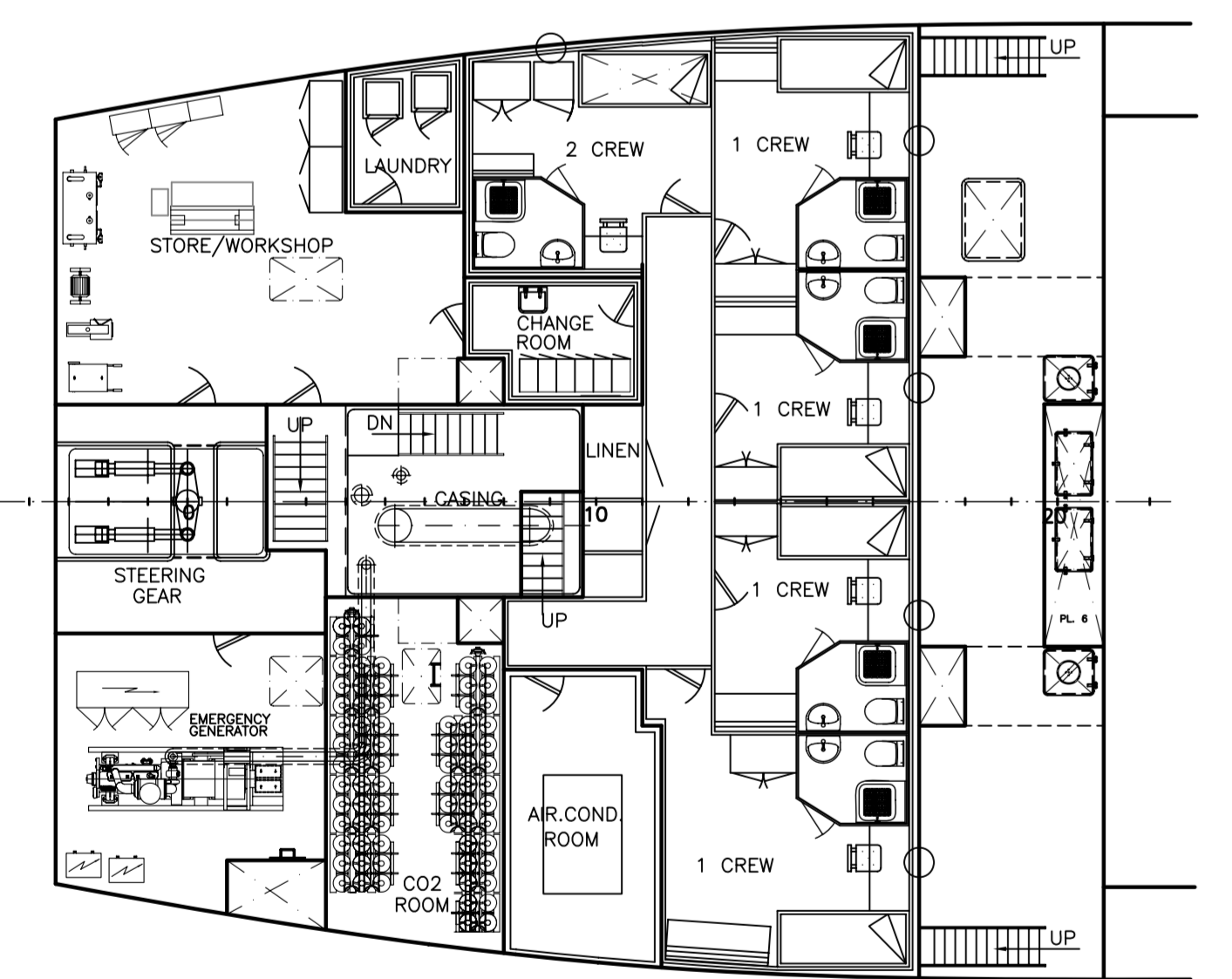
PROFILE



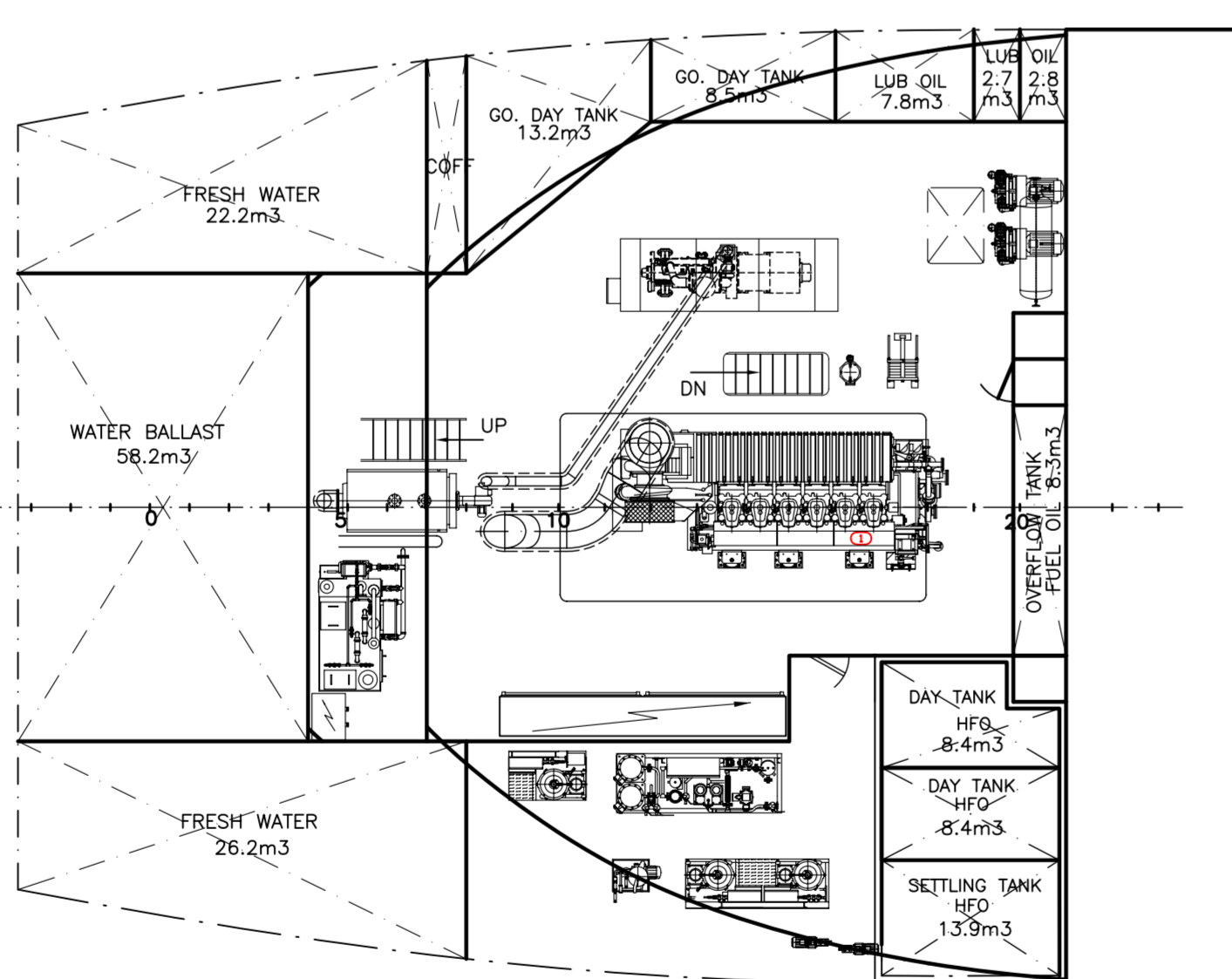
CROSS SECTION



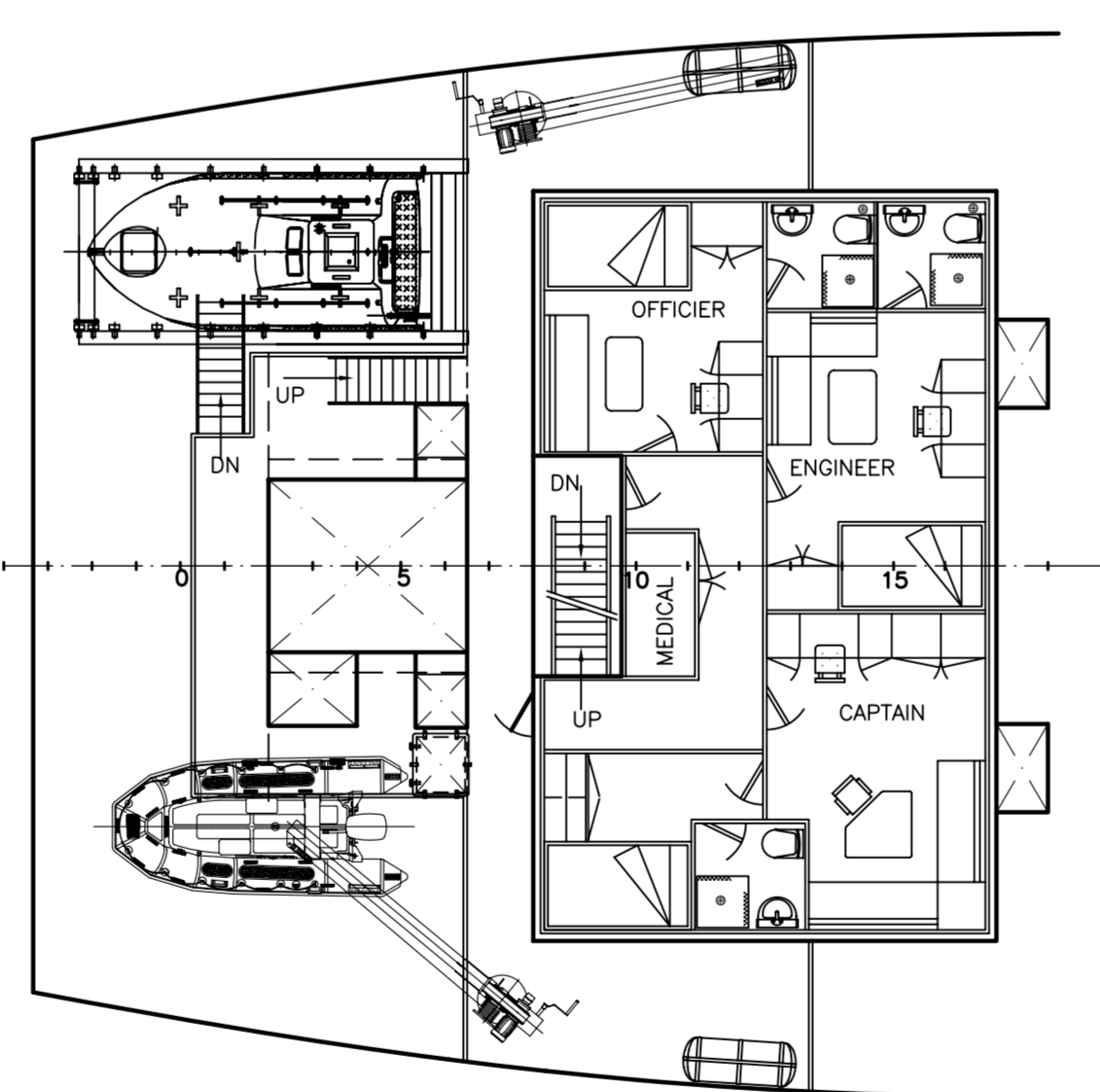
FORE CASTLE DECK



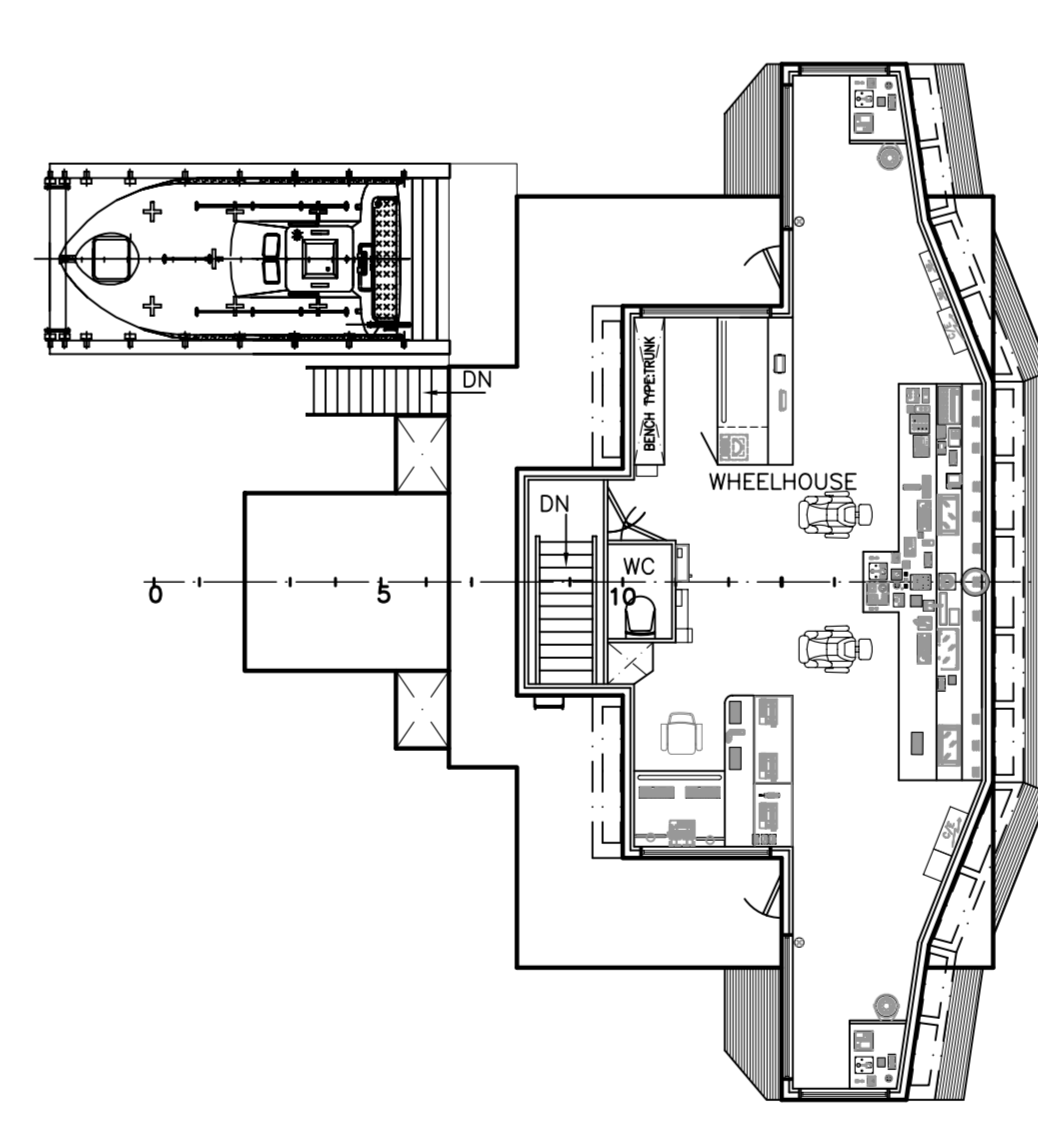
MAIN DECK



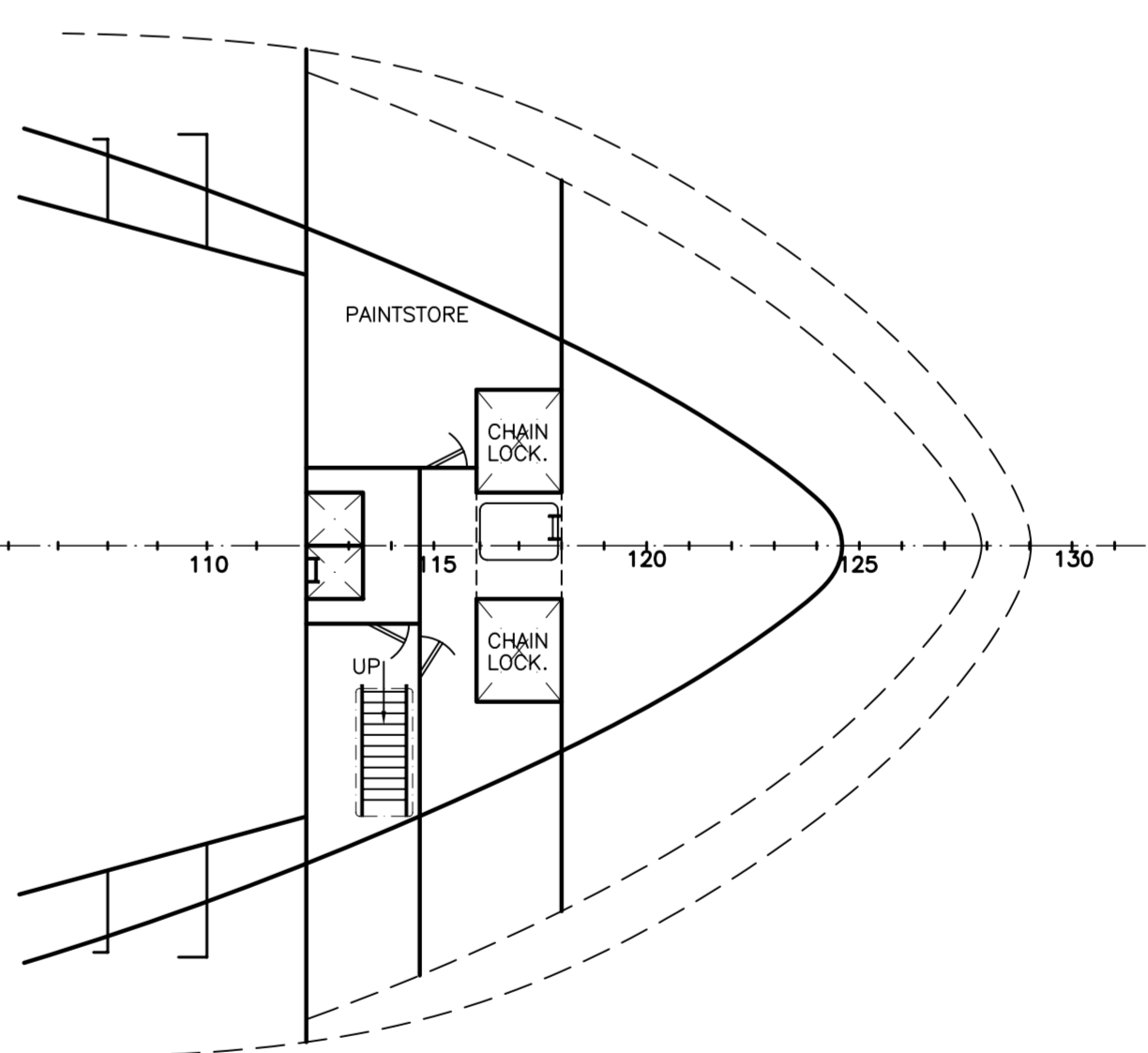
UPPER ER DECK



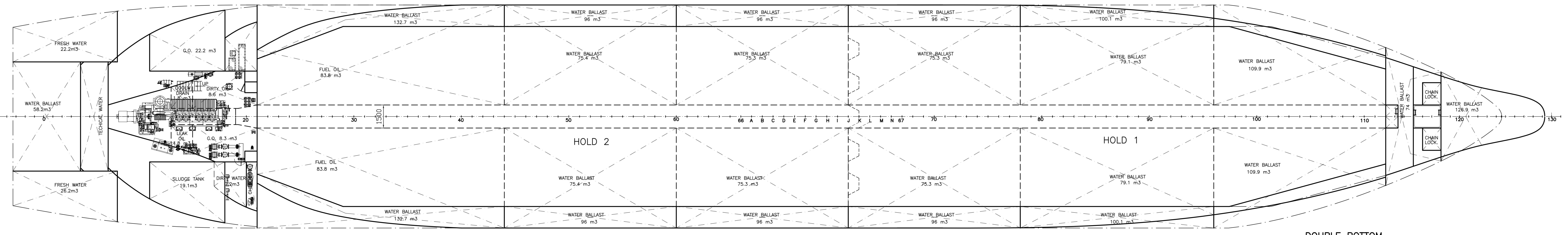
BOAT DECK



BRIDGE DECK



MAIN DECK



DOUBLE BOTTOM

MAIN CHARACTERISTICS

LENGTH OVER ALL	99.60 MTS.
LENGTH BETWEEN PERPENDICULARS	94.50 MTS.
BREADTH MOULDED	14.50 MTS.
DEPTH	7.35 MTS.
DRAUGHT (AT SUMMER FREEBOARD)	6.30 MTS.
CORRESP G DEADWEIGHT	5743 TON
HOLD CAPACITY	249356 CU.FT
TANK CAPACITIES: BALLAST WATER	2155.4 M <sup>3</sup>
FUEL OIL BUNKERS	206.6 M <sup>3</sup>
GO	50.2 M <sup>3</sup>
POTABLE WATER	48.4 M <sup>3</sup>
CREW	10
TONNAGE	3388 GT
CONTAINER ON HATCHES	50 TEU

UPDATE	MODIFICACION	02-05-07	02-05-07	02-05-07	02-05-07
DESIGNADO	V.B.	DESIGNACION	FECHA	FECHA	FECHA
02-05-07	02-05-07	02-05-07	02-05-07	02-05-07	02-05-07
GENERAL ARRANGEMENT			SERMARINE,S.L. VIGO		
ESCALAS: 1:100			BLANCO ACABO		
SERIE TPO: 9700 DWT CONTAINER YESSER.			CONSTRUCCIONES: 637-638		
			PLANO N°: 637-010.01A		

