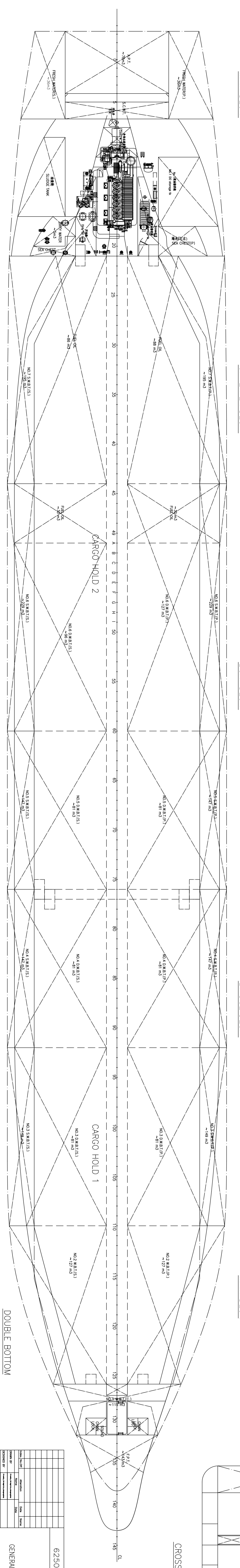
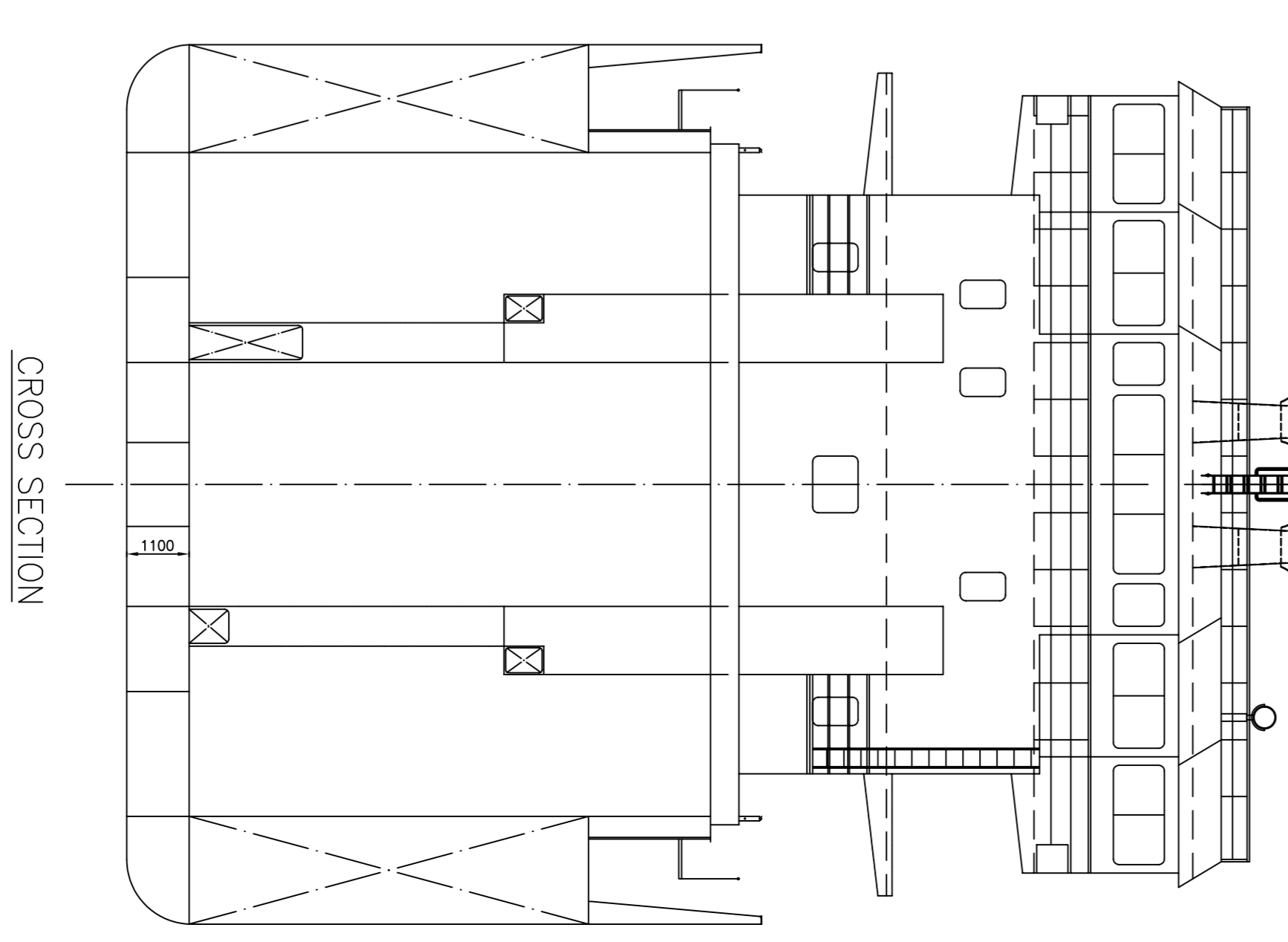
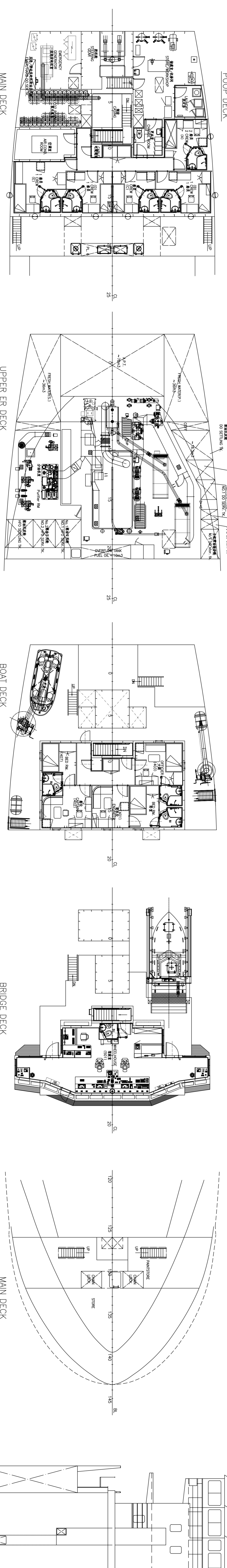
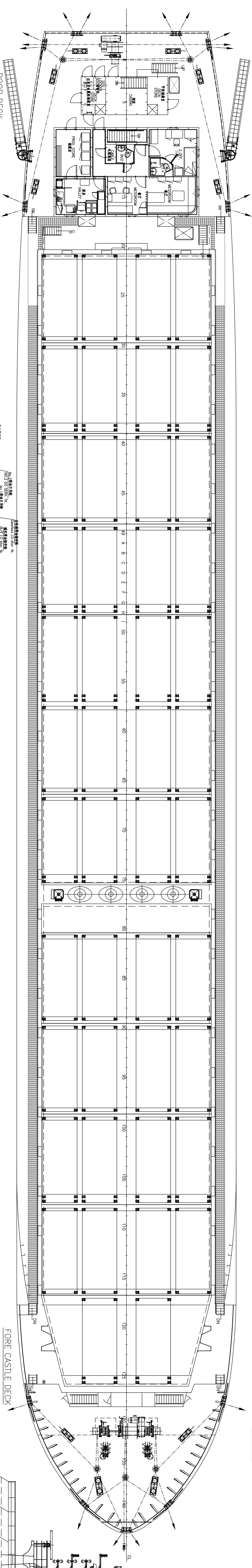
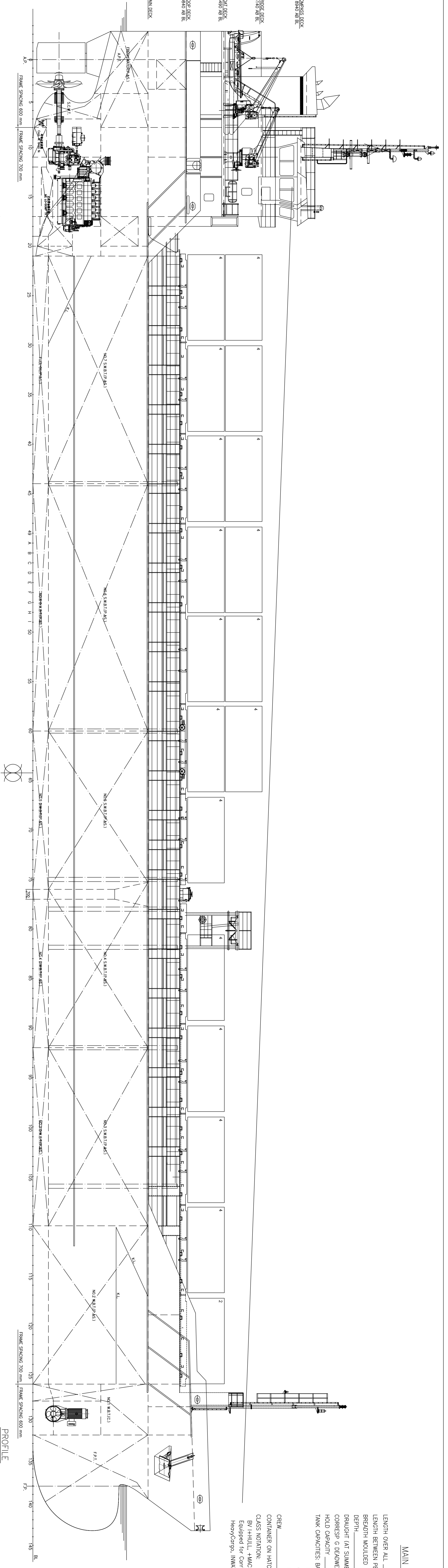


MAIN CHARACTERISTICS

LENGTH OVER ALL	~106.07 MTS
LENGTH BETWEEN PERPENDICULARS	100.92 MTS
BREADTH MOULDED	14.50 MTS
DEPTH	8.14 MTS
DRAUGHT (AT SUMMER FREEBOARD)	6.63 MTS
CORRESP. G. BEAUMONT	6700 TON
HOLD CAPACITY	29840 CUFT
TANK CAPACITIES: BALLAST WATER	3000 M ³
FUEL OIL BUNKERS	264 M ³
CO	54 M ³
POTABLE WATER	76 M ³
CREW	10
CONTAINER ON HATCHES	70 TEU

CLASS NOTATION:
 BY IHULL, *MACH, *AUT-UMS, General Cargo Ship,
 Equipped for Carriage of Containers, Unrestricted Navigation,
 HeavyCargo, INWATERSURVEY, NON-SHIFT



6250 DWT MPC	
GENERAL ARRANGEMENT	
Scale: 1:100	DATE: 1/7
Yonglijiang S/Y	
ODELY MARINE	
9810410	

We warrant the right of copyright for this drawing for the design as well as for the technical information contained therein, without or permission for the drawing not to be copied, distributed, reproduced or published in any other confidential way.